



SUNGLOW SERIES

R290 DC Inverter Space Heating Heat Pump



Official Website

GUANGDONG NEW ENERGY TECHNOLOGY DEVELOPMENT CO., LTD.

NO.125, Chuangyou Road, Xintang Town, Zengcheng, Guangzhou, Guangdong, P.R.China

+86-20-86735355 info@newenergy-e.com www.newtide.com

September 2022 edition, if updated, please refer to the latest version



R290
Eco Refrigerant



Low Noise



A+++
ErP Energy Label



75°C
Water Outlet



Refrigerant

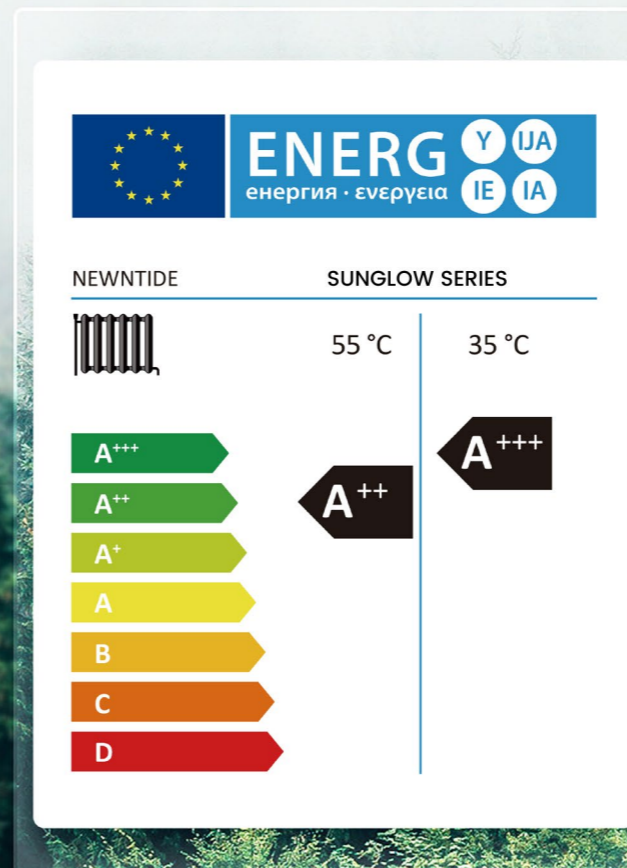
NEWNTIDE Sunglow Series heat pump uses the R290 eco-friendly refrigerant whose GWP is lower than 20 and helps curb global warming. The heat pump with R290 reaches higher efficiency than those with other refrigerants.



Energy Label

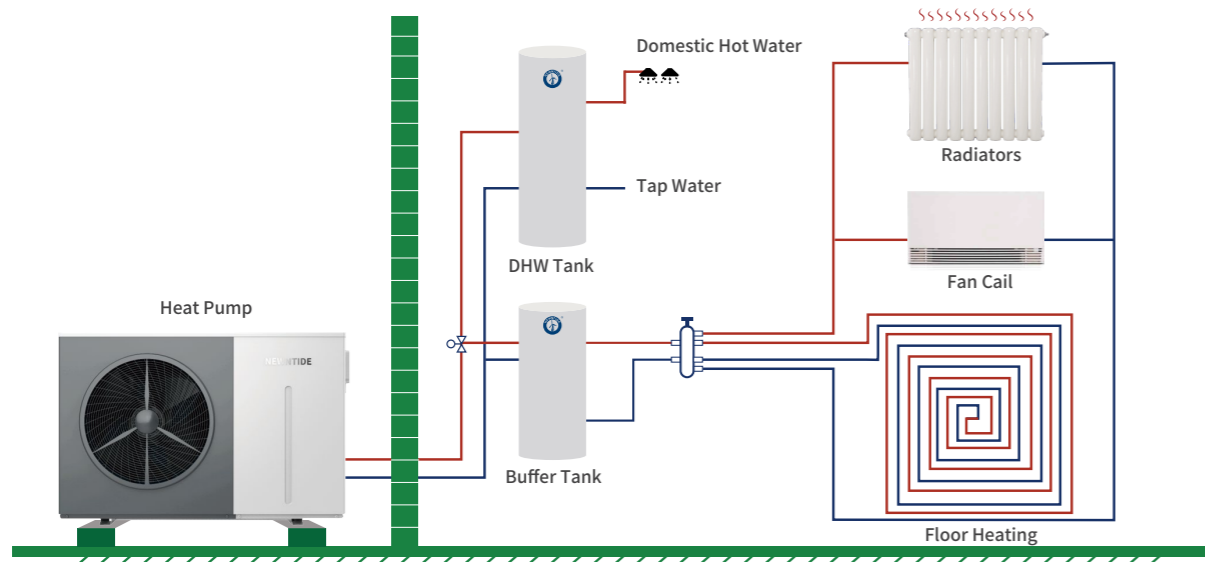
Energy Label

Complying with ErP directives, Sunglow Series proves itself with powerful capability and attains the A+++ energy label, which meets users' needs for low energy bills.



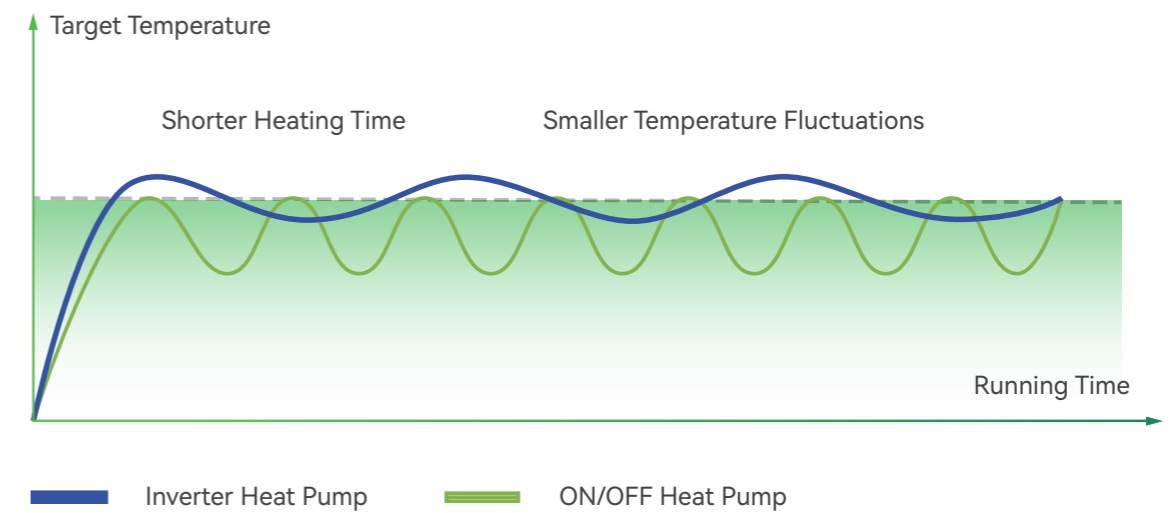
Traditional Installation

The Sunglow Series heat pump integrates with an expansion tank, a circulation water pump, and an electric heater. It can connect with two separate tanks. One tank is to provide 24-hour domestic hot water while the other one is for space heating and cooling.



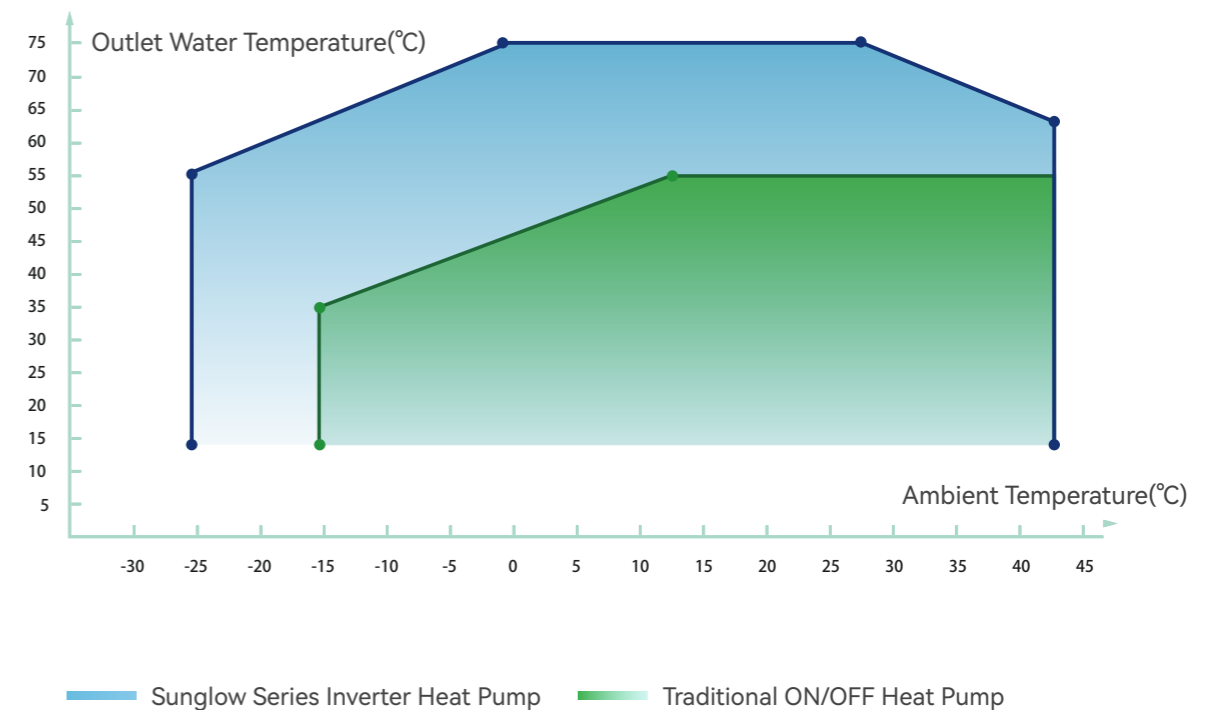
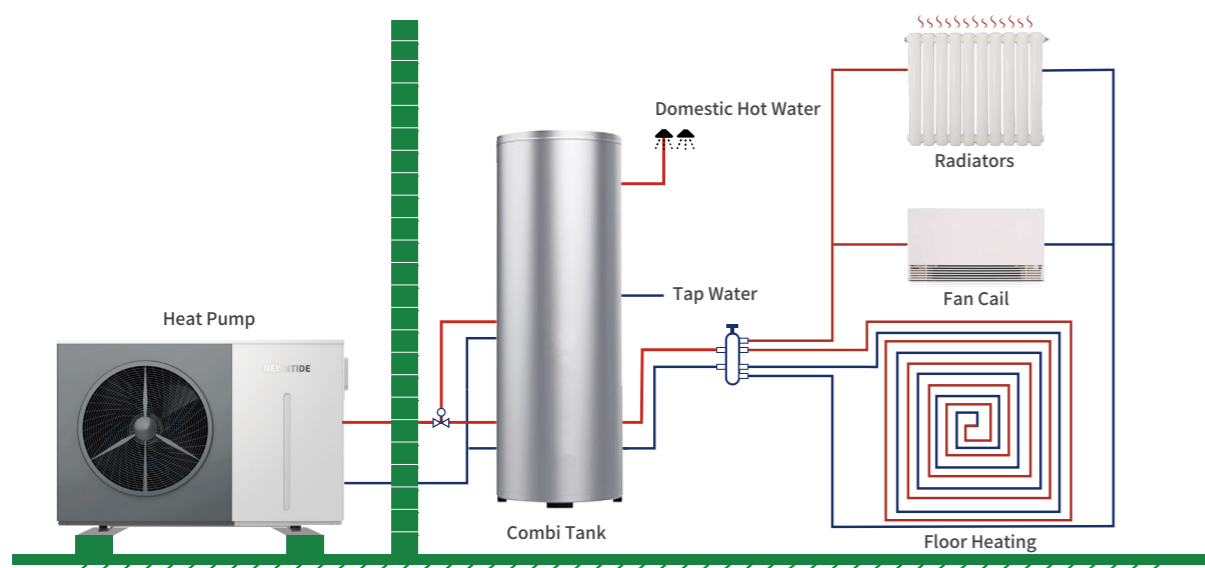
Full DC Inverter Technology

The Sunglow Series adopts full DC inverter technology, which can automatically adjust the frequency according to the ambient temperature to achieve a more constant temperature and bring users a quite comfortable experience at home.



Upgrade Installation with Combi Tank

The Sunglow Series heat pump can connect with a combi tank, including DHW storage tank and buffer tank to provide space heating, cooling and domestic hot water. This upgraded solution saves installation space and installation cost.



Stable running at -25°C ambient temperature and the max water outlet temperature is up to 75°C.

Low Noise

NEWNTIDE devotes to creating a pretty quiet running environment for the user through multiple noise reduction measures.

DC Inverter Compressor



DC Brushless Motor



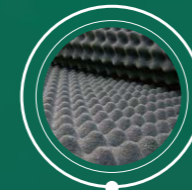
Special Design Fan Blade



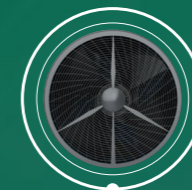
Shock Absorber Plate



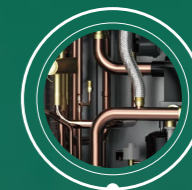
Sound Absorbing Cotton



Turbulence Air Grille



Optimized Pipeline Design

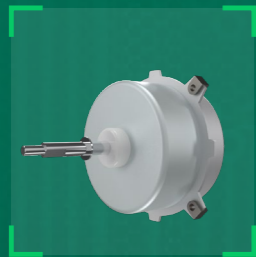


Components



DC Inverter Compressor

Famous brand compressor ensures the stable heating capacity and reduces noise.



DC Fan Motor

DC fan motor is equipped to improve higher work efficiency and lower noise.



Plate Heat Exchanger

Plate heat exchanger with well-known brand is selected to increase heat exchange area for higher COP.



DC Inverter Circulation Pump

Famous silent circulation pump is installed inside the unit to realize more comfortable experience.



Electric Heater

As a backup element, 3kW, 6kW and 9kW are optional for rapid heating.

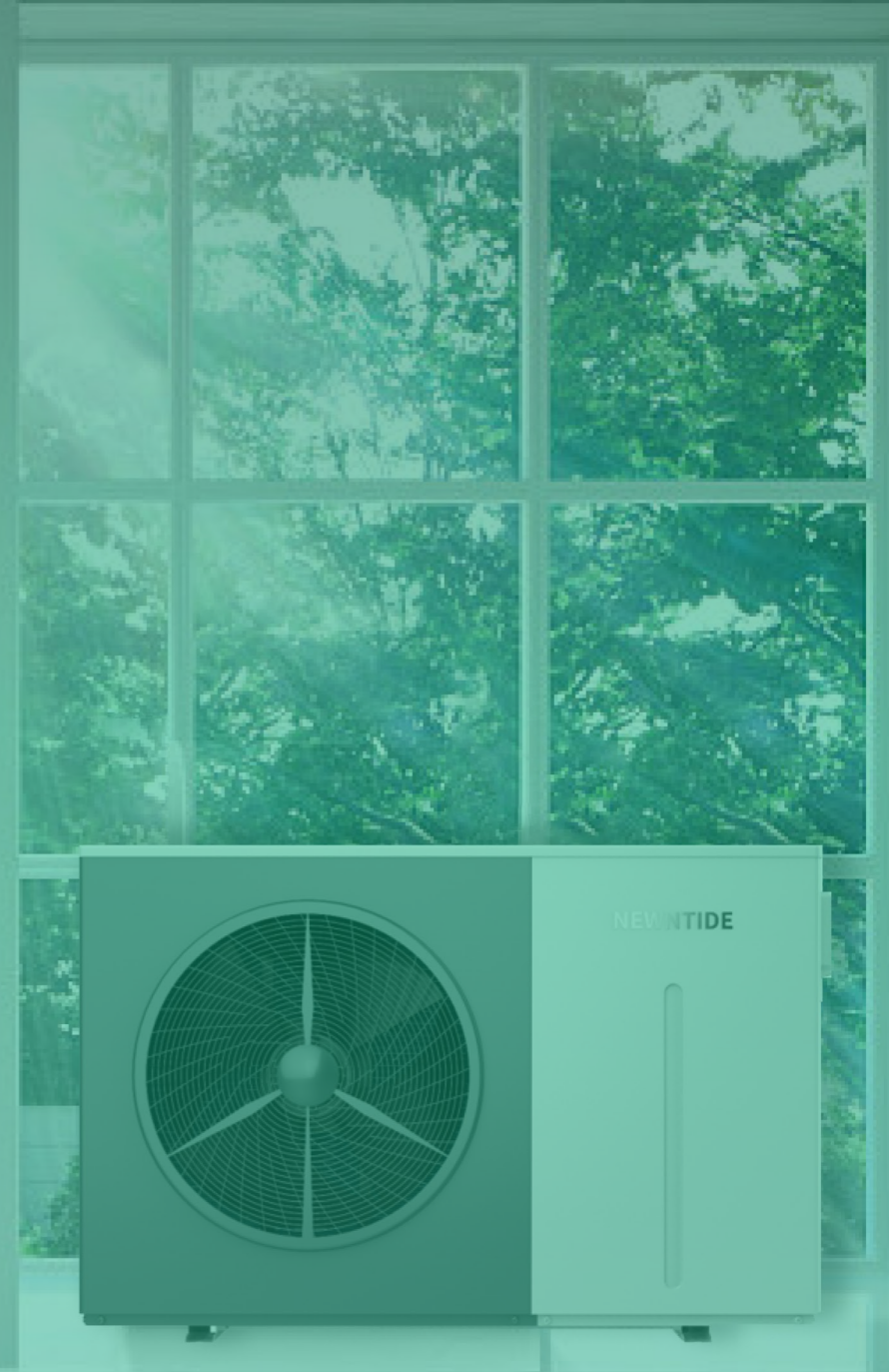


Expansion Tank

Built-in expansion tank to keep stable water system and convenient installation.

Wi-Fi Function

Connect the Smartlife App to check the realtime running status, historical records and control the heat pump remotely.



Heating



Cooling



Hot Water



Hot Water+Cooling



Hot Water+Heating



Mute



Time Setting



Electric Heater



Curve

Wifi Function

Colored Wire Controller



NEWNTIDE R290 Heat pumps utilize an intelligent color LCD display with high definition interface and powerful functions, which is very friendly and helpful for users to view and control.



Model: NE-F	90HCR5INVM	130HCR5INVM	200HCR5TINVM
Power Supply	220~240V~/50Hz		380~415V/3N~/ 50Hz
[Space Heating] Ambient Temp. (DB/WB): 7°C/6°C, Water Temp. (Inlet/Outlet): 30°C/35°C.			
Heating Capacity (kW)	3.50~9.00	4.50~13.00	6.70~20.00
Power Input (kW)	0.58~1.96	0.75~2.83	1.12~4.35
Heating Current Input Range(A)	2.65~8.97	3.43~12.95	1.79~6.96
COP	6.00~4.59	6.00~4.59	5.98~4.60
[Space Heating] Ambient Temp. (DB/WB): 7°C/6°C, Water Temp. (Inlet/Outlet): 50°C/55°C.			
Heating Capacity (kW)	3.15~8.10	3.90~11.60	5.80~17.60
Power Input (kW)	0.68~2.89	0.85~4.14	1.26~6.29
Heating Current Input Range(A)	3.11~13.23	3.89~18.95	2.02~10.06
COP	4.63~2.80	4.59~2.80	4.60~2.80
[Space Cooling] Ambient Temp. (DB/WB): 35°C / -, Water Temp. (Inlet/Outlet): 12°C/7°C.			
Cooling Capacity (kW)	1.53~6.25	2.93~9.15	4.40~14.00
Power Input (kW)	0.33~2.16	0.63~3.16	0.95~4.83
Cooling Current Input Range(A)	1.51~9.89	2.88~14.46	1.52~7.72
EER	4.64~2.89	4.65~2.90	4.63~2.90
[Hot Water] Ambient Temp. (DB/WB): 20°C/15°C, Water Temp. from 15°C to 55°C.			
Heating Capacity (kW)	10.90	15.80	24.10
Power Input (kW)	2.25	3.26	4.97
Hot Water Current Input Range(A)	10.29	14.96	7.95
COP	4.85	4.85	4.85
General Info			
Electric Heater Rated Input (kW)	3kW (single phase) or 9kW (three phase)		
Max. Power Input (kW)	13(4+9)	14(5+9)	15.8(6.8+9)
Max. Running Current (A)	32.7	37.3	25.3
Refrigerant Type	R290		
CO2 Equivalent (Ton)	0.0015	0.0024	0.0036
ErP Level (35°C)	A+++	A+++	A+++
ErP Level (55°C)	A++	A++	A++
Operation Range (°C)	-25~43		
Max. Outlet Water Temp. (°C)	75		
Expansion Tank (L)	2		5
Fan Quantity	1	1	2
WiFi Function	YES		
Rated Water Flow (m³/h)	1.55	2.24	3.44
Water Pressure Drop (kPa)	20	22	28
Water Pipe Connection (inch)	1 1/4"		
Water Proof Class	IPX4		
Sound Pressure Level dB(A) at 1m	43~54	43~55	44~56
Electricity Shock Proof	I		
Net Dimensions (L×W×H) (mm)	1338 x 450 x 870		1338 x 450 x 1320

Notice: The above data is for reference only. The specs data is subject to actual product.